

2. Net Accumulation of Snow by the Stake Method

Observers: JARE-35: Hitoshi SHOJI, Takashi SAITO, Takayuki SHIRAIWA and others.

JARE-36: Takao KAMEDA, Nobuhiko AZUMA, Teruo FURUKAWA, Kenji ISHIZAWA, Tatsuo NAKAMURA and others.

JARE-37: Shuji FUJITA, Masamichi NAKAMURA and others.

Net accumulation of snow was measured by the stake method along oversnow traverse routes in the 1995-96 seasons (Fig. 1).

2.1. Route S-H-Z (Mizuho Route)

Stake heights along the route were measured in January 1995 by JARE-35, in November by JARE-36 and in January 1996 by JARE-36 and -37. The height differences which approximate the net balance of snow along the routes are tabulated in Table 2-1. The last column of the table gives approximately the annual net accumulation of snow. Minimum readings were 0.5 cm.

2.2. Route MD (Dome Fuji Route)

Route MD was set from MD0 (IM3) to MD364 (Relay Point) by JARE-32 in 1991 (FUJII *et al.*, 1995), and extended to MD738 by JARE-33 in 1992 (KAMIYAMA *et al.*, 1994). JARE-34 obtained the first results of net balance between MD0 and MD738 (MOTOYAMA *et al.*, 1995). JARE-35 traced the routes from IM0 to MD364 several times, and the entire route at one time. All data along the route by JARE-35 were published in SHIRAIWA *et al.* (1996).

Stake heights along the route from IM0 to MD732 during the 1995-96 season were measured along the same traverses as the Mizuho route. All data along the route are shown in Table 2-2. The last column of the table gives approximately the annual net accumulation of snow. Minimum readings were 0.5 cm.

2.3. 36-stake farms, 50-stake row and 101-stake row along the route

36-stake farms (100 m x 100 m in area) as shown in Fig. 2 were set up at S16, H68, H180, S122 and Z40 along the Mizuho route. Stake heights of the farms were measured by JARE-35, -36 and -36/-37 on the way to and from Dome Fuji Station. The results are shown in Table 2-3, -4, -5, -6 and -7. The last column of the table gives approximately the annual net accumulation of snow, and the last row gives averages and

standard deviations of net accumulation of snow for each period. Most of the stakes in the Z 40 stake-farm were short, so we set up new stakes near the old ones.

A 101-stake row located at Mizuho Station was measured in January, November, 1995 and January, 1996. The results of the measurements are given in Table 2-8. The stake numbers are shown in Fig. 3. Some of the stakes were short, so we set up new stakes near the old ones.

50-stake rows were installed at MD180, MD364, MD560, DF80 by JARE-33. These stake rows are perpendicular to the prevailing wind direction, and the distance between stakes is 2 m as shown in Fig. 4. These stake rows were measured in January and November 1995 by JARE-36, and in January 1996 by JARE-36 and -37. The results are shown in Tables 2-9, -10, -11 and -12. Minimum readings were 0.5 cm.

2.4. 36-stake farm at Dome Fuji Station

A 36-stake farm was established at some 300 m from Dome Fuji Station at 25 January 1995. The distance between stakes is 20 m. This stake-farm is located northeast from the station (Fig. 5). This direction corresponds to the prevailing wind direction at Dome Fuji. Heights of 36 stakes were measured on days 15 and 30 in each month. The results are shown in Table 2-13. Stake numbers are the same as in Fig. 2. The last column of the table gives approximately the annual net accumulation of snow, and the last row gives averages and s.d. (standard deviations) of net accumulation of snow for each period. Minimum readings were 0.5 cm.

References

- FUJII, Y., MOTOYAMA, H. and AZUMA, N. (1995): Glaciological data collected by the 30th, 31st and 32nd Japanese Antarctic Research Expeditions in 1989-1991. JARE Data Rep., **201** (Glaciology 22), 89p.
- KAMIYAMA, K., FURUKAWA, T., MAENO, H., KISHI, T. and KANAO, M. (1994): Glaciological data collected by the 33rd Japanese Antarctic Research Expedition in 1992. JARE Data Rep., **194** (Glaciology 21), 67p.
- MOTOYAMA, H., ENOMOTO, H., MIYAHARA, M. and KOIKE, J. (1995): Glaciological data collected by the 34th Japanese Antarctic Research Expedition in 1993. JARE Data Rep., **202** (Glaciology 23), 42p.
- SHIRAIWA, T., SAITO, T., SAITO, T., SHOJI, H., TAGUCHI, Y., ABO, T., YAMAMOTO, Y., INAGAWA, Y., YOKOYAMA, K. and WATANABE, O. (1996): Glaciological data collected by the 35th Japanese Antarctic Research Expedition during 1994-1995. JARE Data Rep., **211** (Glaciology 25), 69p.

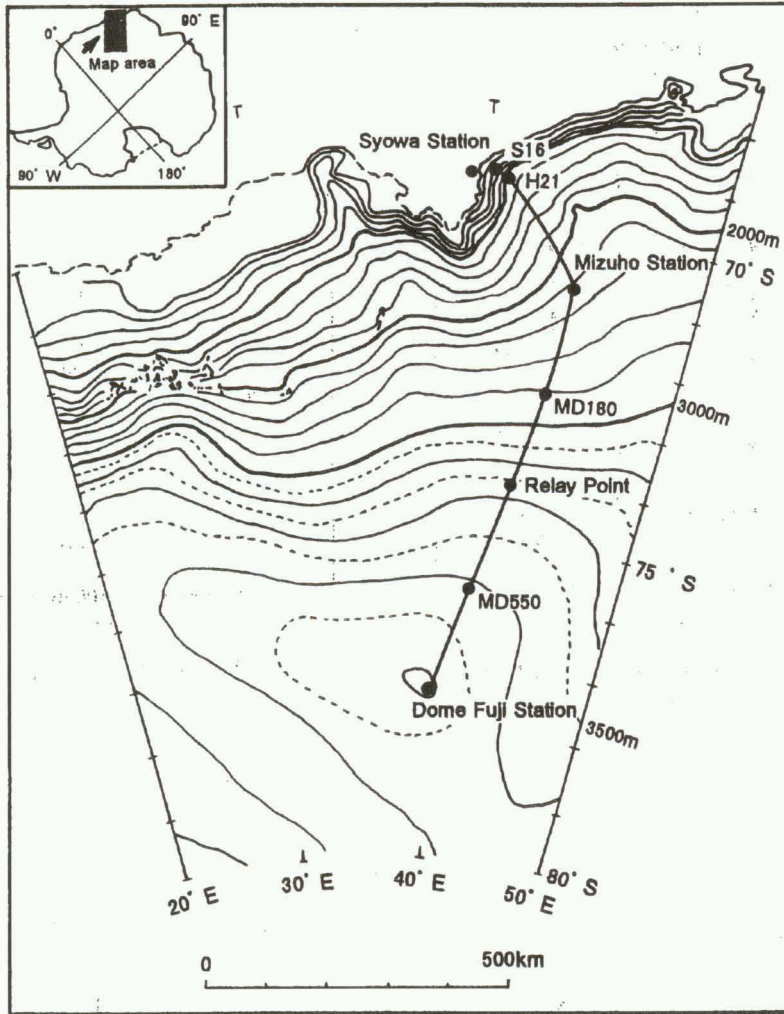


Fig. 1. Map showing the oversnow traverse routes traces by JARE-36.

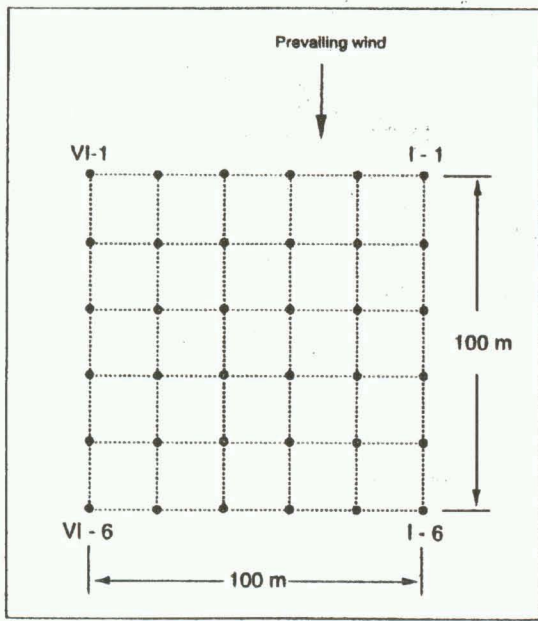


Fig. 2. 36-stake farm at S16, H68, H180, S122, Z40 and Dome Fuji.

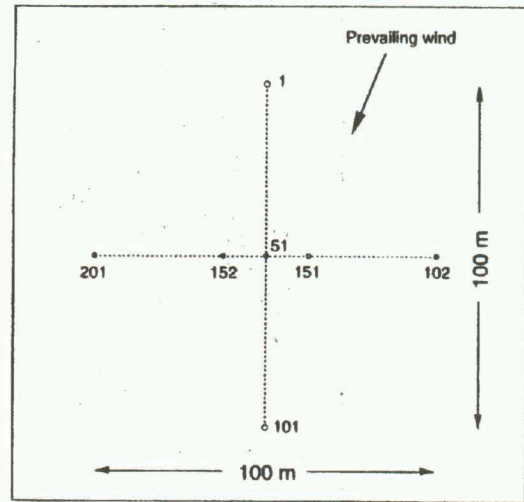


Fig. 3. 101-stake row at Mizuho Station.

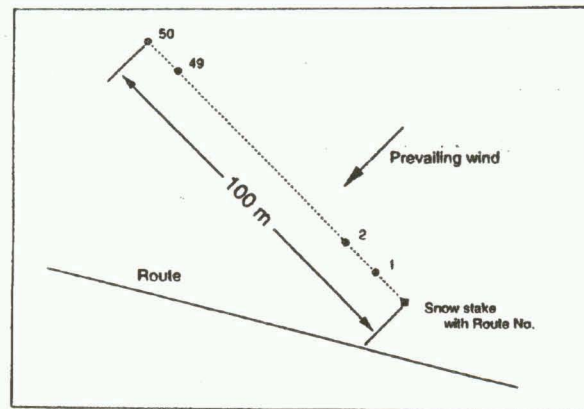


Fig. 4. 50-stake row at MD180, MD364, MD560 and DF80.

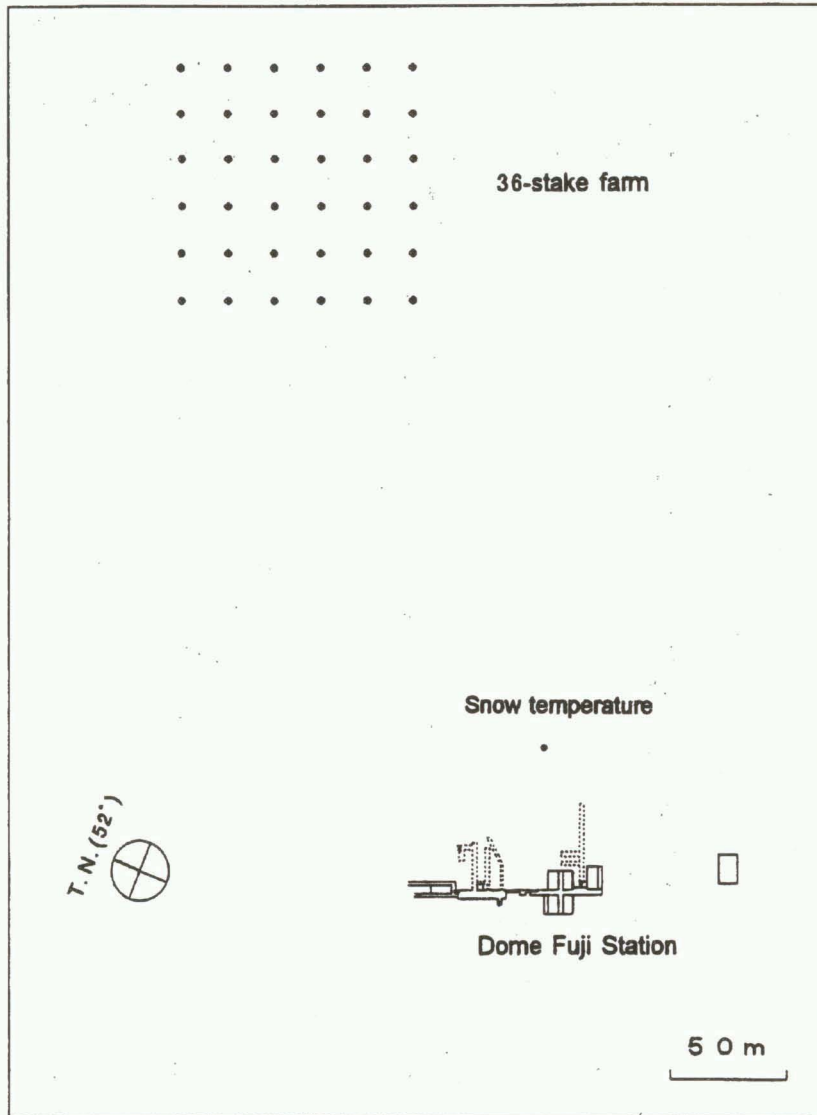


Fig. 5. Schematic diagram around Dome Fuji Station.

Table 2-1. Net accumulation along Routes S-H-Z in 1995-1996.

(cm in depth)

Station No.	Feb. 4-8 1995 (285 - 294days)	Nov. 20-25 1995 (30-40)	Dec. 25-30 1995 (36-43)	Feb. 4-6 1996	Feb. -Dec. 1995 (315-329)
S 16	30.5	-0.5	-10.0		30.0
S 17	57.0	-12.0	-		45.0
S 18	65.5	-9.5	-		56.0
S 19	75.0	-2.5	-		72.5
S 20	62.0	0.0	-		62.0
S 21	-	-5.0	-		-5.0
S 22	72.0	-5.0	-		67.0
S 23	61.0	-9.5	-		51.5
S 24	43.5	-10.0	-		33.5
S 25	55.5	-6.5	3.0		49.0
S 26	71.5	-5.5	-		66.0
S 27	49.0	4.5	-		53.5
S 28	57.5	-6.5	-		51.0
S 29	60.5	-4.5	-		56.0
S 30	62.0	-7.0	-		55.0
H 3	74.0	-5.5	-		68.5
H 9	59.0	-4.5	-		54.5
H 15	71.5	-5.0	-		66.5
H 21	56.0	-3.0	-1.0		53.0
H 27	65.5	-2.5	-		63.0
H 35	50.5	-8.0	-		42.5
H 42	-	-	-3.5		-
H 48	50.0	-8.0	-		42.0
H 54	58.0	-4.5	-		53.5
H 60	65.0	-4.0	-		61.0
H 64	68.0	-7.5	-		60.5
H 68	8.5	-10.5	-		-2.0
H 72	59.0	-1.0	-		58.0
H 76	41.0	-1.5	-4.5		39.5
H 80	29.5	-11.5	-		18.0
H 84	28.5	-6.0	-		22.5
H 88	44.5	-8.5	-		36.0
H 92	28.0	-5.0	-		23.0
H 96	60.0	-9.5	1.0		50.5
H 100	34.0	-6.5	-		27.5
H 104	18.5	-3.5	-		15.0
H 108	34.0	-1.5	-		32.5
H 112	4.0	9.0	-		13.0
H 116	24.0	2.0	-2.0		26.0
H 120	17.0	1.0	-		18.0
H 124	28.5	-5.0	-		23.5

(cm in depth)

Station No.	Feb. 4-8 1995 (285 - 294days)	Nov. 20-25 1995 (30-40)	Dec. 25-30 1995 (36-43)	Feb. 4-6 1996	Feb. -Dec. 1995 (315-329)
H 128	23.0	0.0	-	-	23.0
H 132	52.0	-3.5	-	-	48.5
H 136	39.0	-7.5	-3.0	-	31.5
H 140	45.5	-8.0	-	-	37.5
H 144	59.5	-7.0	-	-	52.5
H 148	17.0	-6.0	-	-	11.0
H 152	29.0	-13.0	-	-	16.0
H 156	32.5	-7.5	-4.0	-	25.0
H 160	37.0	-5.0	-	-	32.0
H 164	29.0	-3.0	-	-	26.0
H 168	46.0	-5.0	-	-	41.0
H 172	12.0	-9.0	-	-	3.0
H 176	36.0	-5.0	-	-	31.0
H 180	24.5	-8.5	-1.5	-	16.0
H 184	30.5	-9.5	-	-	21.0
H 188	35.0	-6.0	-	-	29.0
H 192	46.0	-4.0	-	-	42.0
H 196	43.5	-9.5	2.0	-	34.0
H 200	32.5	-3.5	-	-	29.0
H 204	31.5	-4.5	-	-	27.0
H 208	26.0	1.0	-	-	27.0
H 212	31.5	3.5	-	-	35.0
H 216	14.0	-6.0	0.5	-	8.0
H 220	47.5	-3.5	-	-	44.0
H 224	17.0	-3.0	-	-	14.0
H 228	22.0	3.5	-	-	25.5
H 232	25.5	-8.5	-	-	17.0
H 236	26.0	0.5	-0.5	-	26.5
H 240	21.0	-3.0	-	-	18.0
H 244	35.5	-3.5	-	-	32.0
H 248	21.5	-1.5	-	-	20.0
H 252	47.0	-5.5	-	-	41.5
H 256	21.0	-3.0	-4.0	-	18.0
H 260	62.0	-4.0	-	-	58.0
H 264	53.5	-3.0	-	-	50.5
H 268	79.5	13.5	-	-	93.0
H 272	92.0	-1.0	-	-	91.0
H 276	61.0	-4.5	-8.0	-	56.5
H 280	30.5	1.5	-	-	32.0
H 284	3.5	-4.5	-	-	-1.0
H 288	18.0	-4.5	-	-	13.5

(cm in depth)

Station No.	Feb. 4-8 1995 (285 - 294days)	Nov. 20-25 1995 (30-40)	Dec. 25-30 1995 (36-43)	Feb. 4-6 1996	Feb. -Dec. 1995 (315-329)
H 293	-1.0	0.0	-	-	-1.0
H 297	8.0	-1.0	-1.5	-	7.0
H 301	10.5	-2.0	-	-	8.5
S 122	30.5	-4.5	-	-	26.0
Z 2	21.0	-12.5	-	-	8.5
Z 4	-4.5	-2.0	-	-	-6.5
Z 6	1.5	-2.5	-5.0	-	-1.0
Z 8	4.5	-1.5	-	-	3.0
Z 10	23.0	-3.0	-	-	20.0
Z 12	31.0	-3.5	-	-	27.5
Z 14	36.0	-5.0	-	-	31.0
Z 16	16.0	0.0	-12.0	-	16.0
Z 18	-0.5	-1.5	-	-	-2.0
Z 20	15.5	-1.0	-	-	14.5
Z 22	53.0	-3.0	-	-	50.0
Z 24	4.5	-3.5	-	-	1.0
Z 26	0.5	-0.5	-2.5	-	0.0
Z 28	1.0	-2.0	-	-	-1.0
Z 30	1.0	-3.0	-	-	-2.0
Z 32	3.5	-4.5	-	-	-1.0
Z 34	14.0	-1.0	-	-	13.0
Z 36	13.0	2.0	-2.5	-	15.0
Z 38	10.5	12.5	-	-	23.0
Z 40	8.5	-4.5	-	-	4.0
Z 42	3.5	-0.5	-	-	3.0
Z 46	0.5	-3.0	-	-	-2.5
Z 50	14.0	-2.5	-2.5	-	11.5
Z 54	2.0	-2.5	-	-	-0.5
Z 58	3.5	-3.0	-	-	0.5
Z 62	13.0	-1.0	-	-	12.0
Z 66	5.0	-8.5	-	-	-3.5
Z 70	37.0	-1.5	-2.5	-	35.5
Z 72	-0.5	-1.0	-	-	-1.5
Z 74	-0.5	-2.0	-	-	-2.5
Z 76	14.0	-2.5	-	-	11.5
Z 78	-1.0	-2.0	-	-	-3.0
Z 80	11.0	-5.0	-0.5	-	6.0
Z 82	34.0	8.0	-	-	42.0
Z 84	36.0	0.0	-	-	36.0
Z 86	47.0	-3.0	-	-	44.0
Z 88	18.5	-1.5	-	-	17.0

(cm in depth)

Station No.	Feb. 4-8 1995 (285 - 294days)	Nov. 20-25 1995 (30-40)	Dec. 25-30 1995 (36-43)	Feb. 4-6 1996	Feb. -Dec. 1995 (315-329)
Z 90	18.0	-2.0	-2.5		16.0
Z 92	-	-	-		-
Z 94	0.5	-4.0	-		-3.5
Z 96	4.0	-0.5	-		3.5
Z 98	4.0	-2.0	-		2.0
Z 100	32.0	-3.0	0.5		29.0
Z 102	-0.5	-4.5	-		-5.0

Table 2-2. Net accumulation along Route MD in 1995-1996.

(cm in depth)

Station No.	Jan. 21-Feb. 4 1995 (278-302days)	Nov. 9-19 1995 (42-64)	Dec. 31-Jan. 12 1996 (14-33)	Jan. 26-Feb. 2 1996	Jan. 1995 -Jan. 1996 (330-356)
IM 0	-6.0	-0.5	-	-	-6.5
IM 1	21.5	1.5	-	-	23.0
IM 2	38.0	-6.0	-	-	32.0
MD 0	1.0	2.0	-1.5	-	3.0
MD 2	-	-	-	-	-
MD 4	5.5	0.5	-	-	6.0
MD 6	-4.5	17.5	-	-	13.0
MD 8	11.5	-3.0	-	-	8.5
MD 10	-1.0	-1.5	-1.5	-	-2.5
MD 12	28.0	-2.0	-	-	26.0
MD 14	24.0	-2.0	-	-	22.0
MD 16	5.5	-1.5	-	-	4.0
MD 18	19.5	-2.5	-	-	17.0
MD 20	3.0	-1.5	-1.5	-	1.5
MD 22	12.5	-0.5	-	-	12.0
MD 24	10.0	-1.0	-	-	9.0
MD 26	40.5	-2.5	-	-	38.0
MD 28	38.5	-3.5	-	-	35.0
MD 30	8.5	-1.5	-4.0	-	7.0
MD 32	12.5	-3.5	-	-	9.0
MD 34	3.0	-1.0	-	-	2.0
MD 36	29.0	-2.0	-	-	27.0
MD 38	35.0	-3.0	-	-	32.0
MD 40	2.5	1.5	-0.5	-	4.0
MD 42	48.5	0.5	-	-	49.0
MD 44	21.0	-1.0	-	-	20.0
MD 46	0.5	0.0	-	-	0.5
MD 48	11.0	-2.0	-	-	9.0
MD 50	-0.5	-3.0	-3.0	-	-3.5
MD 52	-3.0	4.0	-	-	1.0
MD 54	2.5	-2.5	-	-	0.0
MD 56	0.0	-1.0	-	-	-1.0
MD 58	-2.0	2.0	-	-	0.0
MD 60	16.5	3.5	-0.5	-	20.0
MD 62	4.0	-2.0	-	-	2.0
MD 64	39.0	-0.5	-	-	38.5
MD 66	0.5	0.0	-	-	0.5
MD 68	-0.5	-4.5	-	-	-5.0
MD 70	51.5	-2.5	-2.5	-	49.0
MD 72	33.0	1.0	-	-	34.0
MD 74	38.5	-4.5	-	-	34.0

(cm in depth)

Station No.	Jan. 21-Feb. 4 1995 (278-302days)	Nov. 9-19 1995 (42-64)	Dec. 31-Jan. 12 1996 (14-33)	Jan. 26-Feb. 2 1996	Jan. 1995 -Jan. 1996 (330-356)
MD 76	3.0	8.5	-	-	11.5
MD 78	44.5	-2.5	-	-	42.0
MD 80	16.0	-1.5	-3.0	-	14.5
MD 82	8.5	13.5	-	-	22.0
MD 84	2.0	-2.5	-	-	-0.5
MD 86	-4.5	-3.0	-	-	-7.5
MD 88	21.5	-5.0	-	-	16.5
MD 90	15.0	-3.5	0.5	-	11.5
MD 92	8.5	-1.5	-	-	7.0
MD 94	0.5	-1.5	-	-	-1.0
MD 96	11.0	0.0	-	-	11.0
MD 98	-3.5	-1.0	-	-	-4.5
MD 100	25.5	-1.5	1.0	-	24.0
MD 102	31.0	-0.5	-	-	30.5
MD 104	51.5	-13.5	-	-	38.0
MD 106	8.5	-1.5	-	-	7.0
MD 108	0.0	0.0	-	-	0.0
MD 110	-3.0	-3.0	-1.0	-	-6.0
MD 112	18.0	-2.0	-	-	16.0
MD 114	-0.5	2.5	-	-	2.0
MD 116	67.0	-2.5	-	-	64.5
MD 118	-1.0	-2.0	-	-	-3.0
MD 120	8.0	-2.0	-3.0	-	6.0
MD 122	12.0	-2.5	-	-	9.5
MD 124	31.5	-1.5	-	-	30.0
MD 126	67.0	-3.0	-	-	64.0
MD 128	44.5	-1.5	-	-	43.0
MD 130	4.0	-5.5	-1.0	-	-1.5
MD 132	0.5	-3.0	-	-	-2.5
MD 134	6.5	-2.0	-	-	4.5
MD 136	4.5	-1.0	-	-	3.5
MD 138	-0.5	-1.5	-	-	-2.0
MD 140	28.0	-1.5	-1.0	-	26.5
MD 142	25.0	-2.0	-	-	23.0
MD 144	0.0	-1.0	-	-	-1.0
MD 146	46.5	-1.0	-	-	45.5
MD 148	40.5	-1.0	-	-	39.5
MD 150	8.0	1.0	-4.0	-	9.0
MD 152	9.5	-1.5	-	-	8.0
MD 154	36.0	-1.0	-	-	35.0
MD 156	32.5	-2.0	-	-	30.5

(cm in depth)

Station No.	Jan. 21-Feb. 4	Nov. 9-19	Dec. 31-Jan. 12	Jan. 26-Feb. 2	Jan. 1995
	1995 (278-302days)	1995 (42-64)	1996 (14-33)	1996	-Jan. 1996 (330-356)
MD 158	-9.0	20.0	-	-	11.0
MD 160	0.0	-1.0	-1.5	-	-1.0
MD 162	36.0	-4.5	-	-	31.5
MD 164	39.0	-1.0	-	-	38.0
MD 166	34.5	4.5	-	-	39.0
MD 168	20.0	5.5	-	-	25.5
MD 170	0.0	-0.5	-1.0	-	-0.5
MD 172	14.0	-1.0	-	-	13.0
MD 174	0.5	-1.0	-	-	-0.5
MD 176	2.0	-1.5	-	-	0.5
MD 178	-0.5	-1.0	-	-	-1.5
MD 180	-0.5	-0.5	-0.5	-	-1.0
MD 182	-1.0	0.0	-	-	-1.0
MD 184	0.5	-0.5	-	-	0.0
MD 186	34.5	-2.5	-	-	32.0
MD 188	12.5	1.5	-	-	14.0
MD 190	11.0	-2.0	3.0	-	9.0
MD 192	9.0	31.0	-	-	40.0
MD 194	0.0	-1.0	-	-	-1.0
MD 196	3.5	-1.5	-	-	2.0
MD 198	0.0	-1.0	-	-	-1.0
MD 200	0.0	-1.0	-1.0	-	-1.0
MD 202	1.5	-0.5	-	-	1.0
MD 204	6.5	-1.5	-	-	5.0
MD 206	-0.5	-0.5	-	-	-1.0
MD 208	43.5	-0.5	-	-	43.0
MD 210	14.0	1.0	0.0	-	15.0
MD 212	9.5	2.5	-	-	12.0
MD 214	1.5	-1.5	-	-	0.0
MD 216	20.0	-4.0	-	-	16.0
MD 218	0.0	6.0	-	-	6.0
MD 220	-0.5	0.5	-2.0	-	0.0
MD 222	10.5	1.5	-	-	12.0
MD 224	5.5	-3.5	-	-	2.0
MD 226	9.0	-1.0	-	-	8.0
MD 228	24.0	-1.0	-	-	23.0
MD 230	5.0	-1.5	-0.5	-	3.5
MD 232	0.0	0.0	-	-	0.0
MD 234	-1.0	-1.0	-	-	-2.0
MD 236	-0.5	-0.5	-	-	-1.0
MD 238	6.5	-1.5	-	-	5.0

(cm in depth)

Station No.	Jan. 21-Feb. 4 1995 (278-302days)	Nov. 9-19 1995 (42-64)	Dec. 31-Jan. 12 1996 (14-33)	Jan. 26-Feb. 2 1996	Jan. 1995 -Jan. 1996 (330-356)
MD 240	-1.0	0.0	-0.5		-1.0
MD 242	63.5	-5.0	-		58.5
MD 244	0.0	16.0	-		16.0
MD 246	0.0	-2.0	-		-2.0
MD 248	-1.5	0.0	-		-1.5
MD 250	1.0	0.0	5.0		1.0
MD 252	-0.5	-0.5	-		-1.0
MD 254	8.5	-2.0	-		6.5
MD 256	3.5	7.0	-		10.5
MD 258	-1.0	-4.0	-		-5.0
MD 260	10.0	-0.5	-1.5		9.5
MD 262	22.0	7.0	-		29.0
MD 264	5.5	2.5	-		8.0
MD 266	35.0	9.0	-		44.0
MD 268	9.5	15.5	-		25.0
MD 270	50.0	-3.0	13.0		47.0
MD 272	49.5	-0.5	-		49.0
MD 274	37.5	4.5	-		42.0
MD 276	0.0	-1.0	-		-1.0
MD 278	20.5	-3.5	-		17.0
MD 280	-1.0	0.0	-0.5		-1.0
MD 282	-1.5	-0.5	-		-2.0
MD 284	27.5	-2.5	-		25.0
MD 286	25.0	16.0	-		41.0
MD 288	0.0	-1.0	-		-1.0
MD 290	1.0	0.0	-1.0		1.0
MD 292	-0.5	-0.5	-		-1.0
MD 294	-0.5	-1.5	-		-2.0
MD 296	0.0	3.0	-		3.0
MD 298	1.5	9.5	-		11.0
MD 300	0.5	16.5	-0.5		17.0
MD 302	27.5	-2.5	-		25.0
MD 304	15.5	2.5	-		18.0
MD 306	47.5	4.5	-		52.0
MD 308	3.0	-1.0	-		2.0
MD 310	-0.5	-1.5	0.0		-2.0
MD 312	23.0	-2.0	-		21.0
MD 314	32.0	-1.0	-		31.0
MD 316	32.5	-1.0	-		31.5
MD 318	0.5	-1.0	-		-0.5
MD 320	-0.5	-0.5	-0.5		-1.0

(cm in depth)

Station No.	Jan. 21-Feb. 4 1995 (278-302days)	Nov. 9-19 1995 (42-64)	Dec. 31-Jan. 12 1996 (14-33)	Jan. 26-Feb. 2 1996	Jan. 1995 -Jan. 1996 (330-356)
MD 322	26.5	-0.5	-	-	26.0
MD 324	10.5	-0.5	-	-	10.0
MD 326	0.5	-11.5	-	-	-11.0
MD 328	14.0	-2.0	-	-	12.0
MD 330	0.5	-1.5	-1.0	-	-1.0
MD 332	-2.0	15.0	-	-	13.0
MD 334	0.0	19.0	-	-	19.0
MD 336	-0.5	-0.5	-	-	-1.0
MD 338	11.0	-0.5	-	-	10.5
MD 340	10.5	3.0	-4.0	-	13.5
MD 342	11.0	0.0	-	-	11.0
MD 344	0.0	-1.0	-	-	-1.0
MD 346	25.0	3.0	-	-	28.0
MD 348	21.0	-1.0	-	-	20.0
MD 350	19.5	-4.0	11.5	-	15.5
MD 352	9.0	-1.0	-	-	8.0
MD 354	40.5	-2.0	-	-	38.5
MD 356	6.5	4.5	-	-	11.0
MD 358	13.5	6.0	-	-	19.5
MD 360	2.0	-1.0	20.0	-	1.0
MD 362	0.0	4.0	-	-	4.0

(cm in depth)

Station No.	Jan. 21-Feb. 4 1995 (278-302days)	Nov. 9-19 1995 (42-64)	Dec. 31-Jan. 12 1996 (14-33)	Jan. 26-Feb. 2 1996	Jan. 1995 -Jan. 1996 (330-356)
MD 364	12.5	-0.5	-	-	12.0
MD 366	15.0	-1.0	-	-	14.0
MD 368	3.0	1.0	-	-	4.0
MD 370	22.5	9.5	-1.0	-	32.0
MD 372	-0.5	13.5	-	-	13.0
MD 374	6.0	-0.5	-	-	5.5
MD 376	52.5	-1.5	-	-	51.0
MD 378	21.5	-1.5	-	-	20.0
MD 380	37.5	-1.0	0.0	-	36.5
MD 382	11.0	-1.0	-	-	10.0
MD 384	-9.5	9.5	-	-	0.0
MD 386	0.0	-0.5	-	-	-0.5
MD 388	1.0	-0.5	-	-	0.5
MD 390	6.5	-2.5	5.5	-	4.0
MD 392	0.5	-0.5	-	-	0.0
MD 394	29.5	-1.5	-	-	28.0
MD 396	21.5	4.5	-	-	26.0
MD 398	9.5	3.0	-	-	12.5
MD 400	8.5	-3.5	33.0	-	5.0
MD 402	10.5	-2.5	-	-	8.0
MD 404	22.0	5.5	-	-	27.5
MD 406	20.0	-1.0	-	-	19.0
MD 408	14.5	5.5	-	-	20.0
MD 410	3.5	0.0	1.5	-	3.5
MD 412	0.5	-1.5	-	-	-1.0
MD 414	8.5	-0.5	-	-	8.0
MD 416	1.5	0.0	-	-	1.5
MD 418	1.5	-1.0	-	-	0.5
MD 420	2.0	-1.0	1.0	-	1.0
MD 422	30.0	-3.0	-	-	27.0
MD 424	3.5	0.0	-	-	3.5
MD 426	26.5	-4.0	-	-	22.5
MD 428	22.0	0.0	-	-	22.0
MD 430	4.0	1.5	0.0	-	5.5
MD 432	14.5	3.5	-	-	18.0
MD 434	0.0	0.0	-	-	0.0
MD 436	0.5	-1.5	-	-	-1.0
MD 438	9.0	4.0	-	-	13.0
MD 440	9.5	-0.5	0.0	-	9.0
MD 442	22.5	0.5	-	-	23.0
MD 444	11.5	5.5	-	-	17.0

(cm in depth)

Station No.	Jan. 21-Feb. 4	Nov. 9-19	Dec. 31-Jan. 12	Jan. 26-Feb. 2	Jan. 1995
	1995	1995	1996	1996	-Jan. 1996
	(278-302days)	(42-64)	(14-33)		(330-356)
MD 446	7.5	-0.5	-	-	7.0
MD 448	7.0	0.0	-	-	7.0
MD 450	7.5	8.0	0.0	-	15.5
MD 452	18.0	-2.0	-	-	16.0
MD 454	15.0	-2.0	-	-	13.0
MD 456	11.5	0.5	-	-	12.0
MD 458	21.0	4.0	-	-	25.0
MD 460	11.0	0.0	-0.5	-	11.0
MD 462	19.0	0.0	-	-	19.0
MD 464	18.5	-2.5	-	-	16.0
MD 466	7.0	-2.0	-	-	5.0
MD 468	-2.0	0.0	-	-	-2.0
MD 470	-1.0	-1.0	0.5	-	-2.0
MD 472	2.5	-0.5	-	-	2.0
MD 474	10.5	0.0	-	-	10.5
MD 476	22.0	-1.0	-	-	21.0
MD 478	1.5	0.5	-	-	2.0
MD 480	1.0	-2.0	2.0	-	-1.0
MD 482	26.0	-3.0	-	-	23.0
MD 484	1.0	10.0	-	-	11.0
MD 486	17.0	1.0	-	-	18.0
MD 488	6.5	-0.5	-	-	6.0
MD 490	-1.0	-1.0	-1.0	-	-2.0
MD 492	22.0	-1.0	-	-	21.0
MD 494	31.5	1.5	-	-	33.0
MD 496	4.5	0.5	-	-	5.0
MD 498	18.5	-1.5	-	-	17.0
MD 500	3.5	-0.5	2.5	-	3.0
MD 502	12.0	-1.0	-	-	11.0
MD 504	19.5	0.5	-	-	20.0
MD 506	22.0	-2.0	-	-	20.0
MD 508	14.0	-2.0	-	-	12.0
MD 510	42.5	16.5	5.0	-	59.0
MD 512	15.0	0.0	-	-	15.0
MD 514	18.0	-2.0	-	-	16.0
MD 516	27.5	-1.5	-	-	26.0
MD 518	14.0	-2.0	-	-	12.0
MD 520	3.5	-1.5	3.5	-	2.0
MD 522	14.5	-0.5	-	-	14.0
MD 524	0.0	-1.0	-	-	-1.0
MD 526	15.0	-1.0	-	-	14.0

(cm in depth)

Station No.	Jan. 21-Feb. 4 1995 (278-302days)	Nov. 9-19 1995 (42-64)	Dec. 31-Jan. 12 1996 (14-33)	Jan. 26-Feb. 2 1996	Jan. 1995 -Jan. 1996 (330-356)
MD 528	2.0	-1.0	-	-	1.0
MD 530	5.0	9.0	0.0	-	14.0
MD 532	26.5	-0.5	-	-	26.0
MD 534	-1.0	0.0	-	-	-1.0
MD 536	2.5	1.5	-	-	4.0
MD 538	10.5	-0.5	-	-	10.0
MD 540	0.5	-0.5	-1.5	-	0.0
MD 542	12.0	-1.0	-	-	11.0
MD 544	1.0	6.0	-	-	7.0
MD 546	14.5	1.5	-	-	16.0
MD 548	-1.5	3.5	-	-	2.0
MD 550	15.0	2.0	2.0	-	17.0
MD 552	0.5	-1.0	-	-	-0.5
MD 554	4.0	-1.0	-	-	3.0
MD 556	13.0	3.0	-	-	16.0
MD 558	8.0	1.0	-	-	9.0
MD 560	21.0	-2.0	0.0	-	19.0
MD 562	1.0	-1.0	-	-	0.0
MD 564	23.0	-1.0	-	-	22.0
MD 566	24.0	0.0	-	-	24.0
MD 568	19.5	2.5	-	-	22.0
MD 570	24.0	-1.0	-0.5	-	23.0
MD 572	0.5	-1.5	-	-	-1.0
MD 574	14.5	-1.5	-	-	13.0
MD 576	13.5	-1.5	-	-	12.0
MD 578	16.5	-1.5	-	-	15.0
MD 580	8.0	16.0	-0.5	-	24.0
MD 582	17.0	-1.0	-	-	16.0
MD 584	14.0	-1.0	-	-	13.0
MD 586	10.5	9.0	-	-	19.5
MD 588	28.5	-1.5	-	-	27.0
MD 590	8.5	-0.5	2.0	-	8.0
MD 592	0.0	2.0	-	-	2.0
MD 594	21.0	0.0	-	-	21.0
MD 596	-0.5	7.5	-	-	7.0
MD 598	5.0	7.0	-	-	12.0
MD 600	29.5	-3.5	1.0	-	26.0
MD 602	-1.0	-1.0	-	-	-2.0
MD 604	-0.5	-0.5	-	-	-1.0
MD 606	9.5	-0.5	-	-	9.0
MD 608	18.5	0.0	-	-	18.5

(cm in depth)

Station No.	Jan. 21-Feb. 4 1995 (278-302days)	Nov. 9-19 1995 (42-64)	Dec. 31-Jan. 12 1996 (14-33)	Jan. 26-Feb. 2 1996	Jan. 1995 -Jan. 1996 (330-356)
MD 610	1.5	0.5	1.0		2.0
MD 612	8.5	-0.5	-		8.0
MD 614	14.5	2.5	-		17.0
MD 616	21.5	-1.5	-		20.0
MD 618	21.5	-1.5	-		20.0
MD 620	16.5	1.5	-2.0		18.0
MD 622	18.5	-	-		18.5
MD 624	13.5	0.5	-		14.0
MD 626	8.0	2.0	-		10.0
MD 628	15.0	-1.0	-		14.0
MD 630	3.0	4.0	0.0		7.0
MD 632	16.0	3.0	-		19.0
MD 634	9.0	0.0	-		9.0
MD 636	11.5	0.5	-		12.0
MD 638	13.0	-1.0	-		12.0
MD 640	23.0	-1.0	0.0		22.0
MD 642	12.0	-1.0	-		11.0
MD 644	11.0	5.0	-		16.0
MD 646	3.0	4.0	-		7.0
MD 648	4.0	1.0	-		5.0
MD 650	8.0	0.0	0.0		8.0
MD 652	14.5	-2.5	-		12.0
MD 654	16.5	-0.5	-		16.0
MD 656	19.0	0.0	-		19.0
MD 658	3.0	2.0	-		5.0
MD 660	1.0	5.0	1.0		6.0
MD 662	11.0	0.0	-		11.0
MD 664	8.5	3.5	-		12.0
MD 666	-3.0	9.0	-		6.0
MD 668	14.0	0.0	-		14.0
MD 670	6.0	3.0	1.5		9.0
MD 672	0.0	0.0	-		0.0
MD 674	6.0	3.0	-		9.0
MD 676	3.0	1.0	-		4.0
MD 678	10.5	-0.5	-		10.0
MD 680	0.0	1.0	1.0		1.0
MD 682	9.5	1.5	-		11.0
MD 684	1.5	0.5	-		2.0
MD 686	4.5	-0.5	-		4.0
MD 688	-1.0	0.0	-		-1.0
MD 690	5.0	2.0	-0.5		7.0

(cm in depth)

Station No.	Jan. 21-Feb. 4 1995 (278-302days)	Nov. 9-19 1995 (42-64)	Dec. 31-Jan. 12 1996 (14-33)	Jan. 26-Feb. 2 1996	Jan. 1995 -Jan. 1996 (330-356)
MD 692	11.0	1.0	-	-	12.0
MD 694	1.5	-0.5	-	-	1.0
MD 696	14.5	1.5	-	-	16.0
MD 698	18.5	-1.5	-	-	17.0
MD 700	19.5	-0.5	0.0	-	19.0
MD 702	0.5	0.5	-	-	1.0
MD 704	0.5	0.5	-	-	1.0
MD 706	19.5	-0.5	-	-	19.0
MD 708	14.0	-2.0	-	-	12.0
MD 710	19.0	0.5	-9.5	-	19.5
MD 712	1.5	5.5	-	-	7.0
MD 714	5.5	0.5	-	-	6.0
MD 716	15.5	-1.5	-	-	14.0
MD 718	1.5	2.5	-	-	4.0
MD 720	22.0	-1.0	-1.0	-	21.0
MD 722	4.0	-1.0	-	-	3.0
MD 724	3.0	-1.0	-	-	2.0
MD 726	15.5	1.5	-	-	17.0
MD 728	10.5	-0.5	-	-	10.0
MD 730	3.5	0.5	1.0	-	4.0
MD 732	4.0	1.0	-	-	5.0

Table 2-3. Net accumulation in 36-stake farm at S16 in 1995-1996.

(cm in depth)

Stake No.	29 Dec. 1994	24 Nov.	24 Dec. 1995	29 Dec. 1994	29 Dec. 1994
	-24 Nov. 1995 (330days)	-24 Dec. 1995 (30)	-6 Feb. 1996 (44)	-24 Dec. 1995 (360)	-6 Feb. 1996 (404)
I-1	51.5	-7.0	-5.0	44.5	39.5
-2	52.5	-6.5	-8.0	46.0	38.0
-3	55.5	-4.0	-9.0	51.5	42.5
-4	36.5	-4.5	-7.0	32.0	25.0
-5	-	-10.0	-7.5	-	-
-6	40.0	-3.0	-9.0	37.0	28.0
II-1	49.0	-3.0	-6.0	46.0	40.0
-2	45.0	0.0	-1.5	45.0	43.5
-3	40.0	-5.5	-2.5	34.5	32.0
-4	45.0	-7.0	-6.0	38.0	32.0
-5	45.5	-8.5	-2.5	37.0	34.5
-6	42.5	-8.0	-4.0	34.5	30.5
III-1	47.5	-5.5	-3.5	42.0	38.5
-2	54.0	-6.0	-9.0	48.0	39.0
-3	48.5	-6.5	-8.0	42.0	34.0
-4	41.0	-2.0	-9.0	39.0	30.0
-5	42.0	-6.5	-9.0	35.5	26.5
-6	44.5	-10.5	-7.0	34.0	27.0
IV-1	38.0	-7.5	-8.5	30.5	22.0
-2	29.0	-5.5	-7.5	23.5	16.0
-3	26.5	-7.5	-6.0	19.0	13.0
-4	31.5	-4.5	-8.0	27.0	19.0
-5	20.0	-4.5	-8.0	15.5	7.5
-6	28.5	0.5	-8.0	29.0	21.0
V-1	36.0	-8.5	-7.5	27.5	20.0
-2	39.0	-5.0	-9.0	34.0	25.0
-3	25.0	-9.0	-6.0	16.0	10.0
-4	11.5	-4.5	-7.0	7.0	0.0
-5	21.0	-6.5	-1.0	14.5	13.5
-6	17.5	-7.5	-6.0	10.0	4.0
VI-1	23.5	-7.5	-8.0	16.0	8.0
-2	21.0	-9.0	-1.0	12.0	11.0
-3	28.0	-6.0	-7.0	22.0	15.0
-4	31.5	-7.5	-8.5	24.0	15.5
-5	23.5	-5.0	-8.0	18.5	10.5
-6	23.5	-7.0	-8.0	16.5	8.5
average	34.9	-6.0	-6.6	29.1	22.8
s. d.	12.8	2.4	2.4	12.8	12.5

Table 2-4. Net accumulation in 36-stake farm at H68 in 1995-1996.

(cm in depth)

Stake No.	1 Jan.	22 Nov.	26 Dec. 1995	1 Jan.	1 Jan. 1995
	-22 Nov. 1995 (325days)	-26 Dec. 1995 (34)	-5 Feb. 1996 (41)	-26 Dec. 1995 (359)	-5 Feb. 1996 (400)
I-1	6.5	-6.5	-1.0	0.0	-1.0
-2	13.5	-2.5	-5.0	11.0	6.0
-3	21.0	-4.0	-3.0	17.0	14.0
-4	34.0	-15.0	-1.0	19.0	18.0
-5	12.0	-6.0	-6.5	6.0	-0.5
-6	9.0	-5.0	-4.0	4.0	0.0
II-1	12.0	-8.0	1.5	4.0	5.5
-2	15.0	0.0	-4.5	15.0	10.5
-3	37.0	-15.0	-14.5	22.0	7.5
-4	15.0	-7.0	-2.0	8.0	6.0
-5	13.0	-8.0	-1.5	5.0	3.5
-6	29.5	-3.5	-3.0	26.0	23.0
III-1	9.0	-1.0	-7.5	8.0	0.5
-2	11.5	-0.5	-2.5	11.0	8.5
-3	1.0	-5.0	-4.0	-4.0	-8.0
-4	8.5	5.5	-2.5	14.0	11.5
-5	28.0	1.0	-2.0	29.0	27.0
-6	18.0	-2.0	-3.0	16.0	13.0
IV-1	18.5	-10.5	-1.0	8.0	7.0
-2	31.5	-6.5	-3.5	25.0	21.5
-3	22.0	-13.0	-0.5	9.0	8.5
-4	10.5	-2.5	-4.5	8.0	3.5
-5	3.0	-4.0	-5.5	-1.0	-6.5
-6	29.0	-5.0	-16.0	24.0	8.0
V-1	42.0	2.0	-4.0	44.0	40.0
-2	22.0	-8.0	1.0	14.0	15.0
-3	14.0	-5.0	-1.0	9.0	8.0
-4	21.5	-7.5	-8.5	14.0	5.5
-5	25.0	-12.0	-2.5	13.0	10.5
-6	22.5	-3.5	-3.5	19.0	15.5
VI-1	14.0	-6.0	-4.5	8.0	3.5
-2	14.5	-10.5	-2.0	4.0	2.0
-3	17.0	-3.0	-3.0	14.0	11.0
-4	11.5	-5.5	-0.5	6.0	5.5
-5	11.5	-7.5	-4.0	4.0	0.0
-6	14.5	-1.5	-4.5	13.0	8.5
average	17.7	-5.3	-3.7	12.4	8.7
s. d.	9.3	4.5	3.5	9.3	9.1

Table 2-5. Net accumulation in 36-stake farm at H180 in 1995-1996.

(cm in depth)

Stake No.	2 Jan.	22 Nov.	27 Dec. 1995	2 Jan.	2 Jan. 1995
	-22 Nov. 1995 (324days)	-27 Dec. 1995 (35)	-4 Feb. 1996 (39)	-27 Dec. 1995 (359)	-4 Feb. 1996 (398)
I-1	26.0	-2.0	-1.5	24.0	22.5
-2	28.5	-3.5	-2.5	25.0	22.5
-3	33.0	-13.0	-1.0	20.0	19.0
-4	33.0	-8.0	-3.5	25.0	21.5
-5	34.5	-13.5	3.0	21.0	24.0
-6	61.0	-13.0	-4.0	48.0	44.0
II-1	31.5	-4.5	-4.0	27.0	23.0
-2	25.0	-2.0	-1.5	23.0	21.5
-3	32.5	-2.5	-3.5	30.0	26.5
-4	36.5	-1.5	-1.0	35.0	34.0
-5	39.5	-7.5	-2.5	32.0	29.5
-6	51.5	-16.5	-7.0	35.0	28.0
III-1	34.0	-3.0	-2.0	31.0	29.0
-2	32.0	-6.0	-0.5	26.0	25.5
-3	35.0	-9.0	3.0	26.0	29.0
-4	35.5	-3.5	15.5	32.0	47.5
-5	28.5	-0.5	0.0	28.0	28.0
-6	50.5	-40.5	-3.0	10.0	7.0
IV-1	61.5	-4.5	-4.0	57.0	53.0
-2	34.5	14.5	-3.0	49.0	46.0
-3	30.0	-4.0	-4.0	26.0	22.0
-4	32.5	-10.5	9.0	22.0	31.0
-5	57.5	-21.5	-2.5	36.0	33.5
-6	46.0	-37.0	1.0	9.0	10.0
V-1	27.5	-7.5	0.0	20.0	20.0
-2	14.0	6.0	-2.0	20.0	18.0
-3	34.5	-6.5	-0.5	28.0	27.5
-4	35.0	-6.0	-3.0	29.0	26.0
-5	25.5	-6.5	-2.5	19.0	16.5
-6	37.5	-2.5	-3.5	35.0	31.5
VI-1	41.5	-9.5	4.5	32.0	36.5
-2	38.5	3.5	-3.0	42.0	39.0
-3	35.5	-4.5	-4.0	31.0	27.0
-4	21.5	2.5	-7.5	24.0	16.5
-5	23.5	-9.5	1.5	14.0	15.5
-6	26.0	-8.0	-0.5	18.0	17.5
average	35.3	-7.3	-1.1	28.0	26.9
s. d.	10.4	9.9	4.1	10.0	10.0

Table 2-6. Net accumulation in 36-stake farm at S122 in 1995-1996.

(cm in depth)

Stake No.	4 Jan.	20 Nov.	28 Dec. 1995	4 Jan.	4 Jan. 1995
	-20 Nov. 1995 (320days)	-28 Dec. 1995 (38)	-4 Feb. 1996 (38)	-28 Dec. 1995 (358)	-4 Feb. 1996 (396)
I-1	20.0	2.0	4.5	22.0	26.5
-2	12.0	4.0	-3.0	16.0	13.0
-3	28.0	-3.0	0.0	25.0	25.0
-4	51.0	-2.0	-3.0	49.0	46.0
-5	17.5	-5.0	-4.0	12.5	8.5
-6	14.5	6.0	-1.5	20.5	19.0
II-1	5.5	9.5	-1.0	15.0	14.0
-2	44.5	-1.0	-2.5	43.5	41.0
-3	30.5	-2.0	-1.0	28.5	27.5
-4	29.0	5.5	-2.0	34.5	32.5
-5	32.0	4.0	-2.0	36.0	34.0
-6	32.0	11.0	14.0	43.0	57.0
III-1	5.0	-3.0	-1.0	2.0	1.0
-2	13.0	1.5	-3.0	14.5	11.5
-3	-4.0	2.0	-2.5	-2.0	-4.5
-4	18.5	-1.5	-2.5	17.0	14.5
-5	52.0	-4.0	-5.0	48.0	43.0
-6	19.0	-3.0	-9.0	16.0	7.0
IV-1	-0.5	3.5	-3.0	3.0	0.0
-2	1.0	-3.5	1.5	-2.5	-1.0
-3	6.0	1.0	-2.5	7.0	4.5
-4	18.0	-5.5	-3.0	12.5	9.5
-5	19.5	-5.0	-3.5	14.5	11.0
-6	-3.0	-1.5	-5.0	-4.5	-9.5
V-1	52.0	-5.5	-3.5	46.5	43.0
-2	38.0	-4.0	-11.5	34.0	22.5
-3	18.0	-5.0	-7.0	13.0	6.0
-4	16.5	-9.5	12.5	7.0	19.5
-5	12.0	7.0	-2.5	19.0	16.5
-6	5.0	6.0	-3.5	11.0	7.5
VI-1	7.0	1.0	-1.0	8.0	7.0
-2	26.5	-1.5	-3.5	25.0	21.5
-3	13.0	-5.0	-0.5	8.0	7.5
-4	-4.0	-2.0	-3.0	-6.0	-9.0
-5	4.0	-1.5	-3.0	2.5	-0.5
-6	-2.0	-1.5	-2.5	-3.5	-6.0
average	18.0	-0.3	-1.9	17.7	15.7
s. d.	15.7	4.6	4.5	15.6	16.3

Table 2-7. Net accumulation in 36-stake farm at Z40 in 1995-1996.

(cm in depth)

Stake No.	4 Jan.	20 Nov.	29 Dec. 1995	4 Jan.	4 Jan. 1995
	-20 Nov. 1995 (320days)	-29 Dec. 1995 (39)	-3 Feb. 1996 (36)	-29 Dec. 1995 (359)	-3 Feb. 1996 (395)
I -1	23.5	-3.0	2.0	20.5	22.5
-2	53.5	-3.0	-5.0	50.5	45.5
-3	36.5	-4.0	-5.5	32.5	27.0
-4	20.0	-1.5	2.0	18.5	20.5
-5	11.5	-2.0	5.5	9.5	15.0
-6	11.0	-3.5	-26.0	7.5	-18.5
II -1	-2.5	-2.5	-3.0	-5.0	-8.0
-2	-1.5	-1.5	-3.0	-3.0	-6.0
-3	39.0	-5.0	-2.5	34.0	31.5
-4	11.5	-0.5	5.5	11.0	16.5
-5	19.0	-6.0	-11.0	13.0	2.0
-6	-1.0	-3.0	-0.5	-4.0	-4.5
III -1	-2.5	21.5	0.5	19.0	19.5
-2	-0.5	-2.5	-0.5	-3.0	-3.5
-3	-18.0	-3.5	2.5	-21.5	-19.0
-4	7.0	-0.5	-1.5	6.5	5.0
-5	-1.5	-1.5	-5.0	-3.0	-8.0
-6	2.5	-3.0	42.0	-0.5	41.5
IV -1	8.0	-4.0	-2.5	4.0	1.5
-2	23.5	-1.5	-3.0	22.0	19.0
-3	33.5	-1.5	-0.5	32.0	31.5
-4	0.5	-11.5	2.5	-11.0	-8.5
-5	2.0	-3.0	0.5	-1.0	-0.5
-6	8.5	-0.5	-48.0	8.0	-40.0
V -1	-0.5	-1.0	-1.5	-1.5	-3.0
-2	1.0	-2.5	-3.5	-1.5	-5.0
-3	-16.0	-2.0	8.5	-18.0	-9.5
-4	9.0	-5.0	0.0	4.0	4.0
-5	8.5	-9.0	12.0	-0.5	11.5
-6	-0.5	-2.5	-5.0	-3.0	-8.0
VI -1	1.0	-3.0	-2.5	-2.0	-4.5
-2	10.5	-4.0	1.5	6.5	8.0
-3	-15.0	-5.5	-1.5	-20.5	-22.0
-4	4.5	-4.0	-0.5	0.5	0.0
-5	-4.0	-1.5	-8.0	-5.5	-13.5
-6	-1.5	-2.0	19.5	-3.5	16.0
average	7.8	-2.5	-1.0	5.3	4.3
s. d.	15.1	4.6	12.6	15.3	18.2

Table 2-8. Net accumulation along 101-stake row at Mizuho Station in 1995-1996.
(cm in depth)

Stake No.	6 Jan.	19 Nov.	29 Dec. 1995	6 Jan.	6 Jan. 1995
	-19 Nov. 1995 (317days)	-29 Dec. 1995 (40)	-2 Feb. 1996 (35)	-29 Dec. 1995 (357)	-2 Feb. 1996 (392)
102	-2.0	-1.5	3.5	-3.5	0.0
103	4.0	0.0	-2.0	4.0	2.0
104	5.0	11.0	-3.0	16.0	13.0
105	1.5	-1.0	3.5	0.5	4.0
106	-1.0	10.5	1.0	9.5	10.5
107	1.5	3.5	-2.5	5.0	2.5
108	12.0	-1.0	-2.0	11.0	9.0
109	5.0	10.0	-2.0	15.0	13.0
110	3.5	3.0	0.5	6.5	7.0
111	-3.0	1.0	9.0	-2.0	7.0
112	1.0	1.0	6.0	2.0	8.0
113	-2.0	-1.0	-1.5	-3.0	-4.5
114	2.0	-1.5	4.0	0.5	4.5
115	-1.0	-2.0	5.0	-3.0	2.0
116	-2.0	-3.0	1.5	-5.0	-3.5
117	-0.5	-3.5	3.5	-4.0	-0.5
118	-1.0	-3.0	3.0	-4.0	-1.0
119	-1.5	-1.5	6.5	-3.0	3.5
120	-1.5	-0.5	2.0	-2.0	0.0
121	-1.5	-3.5	1.0	-5.0	-4.0
122	6.5	-2.5	5.0	4.0	9.0
123	8.0	-2.0	6.5	6.0	12.5
124	2.5	-2.5	-1.5	0.0	-1.5
125	-1.5	-1.5	4.0	-3.0	1.0
126	-1.5	-1.5	7.5	-3.0	4.5
127	-1.0	-0.5	18.0	-1.5	16.5
128	12.0	-1.0	-2.0	11.0	9.0
129	26.5	-3.0	6.0	23.5	29.5
130	22.0	-3.0	16.0	19.0	35.0
131	10.5	8.5	24.0	19.0	43.0
132	2.5	-1.5	21.0	1.0	22.0
133	-2.0	-2.0	11.0	-4.0	7.0
134	0.5	-2.5	10.0	-2.0	8.0
135	-1.0	-0.5	16.5	-1.5	15.0
136	-0.5	-1.5	15.0	-2.0	13.0
137	12.0	1.5	22.5	13.5	36.0
138	6.5	15.0	-3.0	21.5	18.5
139	6.5	5.5	-4.0	12.0	8.0
140	-1.5	-3.5	-1.0	-5.0	-6.0
141	-3.5	-1.5	2.5	-5.0	-2.5
142	-2.5	-2.5	5.5	-5.0	0.5
143	-1.5	-0.5	-2.5	-2.0	-4.5
144	-2.5	-1.5	-2.0	-4.0	-6.0
145	-1.0	-2.0	-4.0	-3.0	-7.0
146	-3.5	-2.5	-3.0	-6.0	-9.0
147	1.5	-1.5	-2.5	0.0	-2.5
148	4.0	-2.0	1.0	2.0	3.0
149	-2.0	-1.0	-0.5	-3.0	-3.5
150	-5.5	-2.5	-1.5	-8.0	-9.5
151	-1.0	-3.5	-1.5	-4.5	-6.0
51	-2.0	-2.0	-1.0	-4.0	-5.0

(cm in depth)

Stake No.	6 Jan.	19 Nov.	29 Dec. 1995	6 Jan.	6 Jan. 1995
	-19 Nov. 1995 (317days)	-29 Dec. 1995 (40)	-2 Feb. 1996 (35)	-29 Dec. 1995 (357)	-2 Feb. 1996 (392)
152	-2.0	0.0	-2.5	-2.0	-4.5
153	-1.5	-1.5	-2.0	-3.0	-5.0
154	-1.0	-1.0	-2.0	-2.0	-4.0
155	-2.0	-2.0	3.0	-4.0	-1.0
156	-1.0	0.0	9.5	-1.0	8.5
157	-1.0	3.0	1.5	2.0	3.5
158	-1.0	3.0	-5.0	2.0	-3.0
159	-1.0	-1.0	-0.5	-2.0	-2.5
160	-1.5	-0.5	-2.5	-2.0	-4.5
161	6.0	-2.0	-3.0	4.0	1.0
162	-1.5	0.5	-3.0	-1.0	-4.0
163	-2.0	-1.0	-1.0	-3.0	-4.0
164	-3.0	-2.0	-2.5	-5.0	-7.5
165	2.0	5.5	-7.5	7.5	0.0
166	-2.5	1.5	-5.0	-1.0	-6.0
167	-2.5	-2.5	-2.0	-5.0	-7.0
168	1.0	-3.0	-2.0	-2.0	-4.0
169	-2.5	-1.5	-1.0	-4.0	-5.0
170	-0.5	3.5	-5.0	3.0	-2.0
171	1.0	-1.0	-1.5	0.0	-1.5
172	3.0	-1.0	-4.0	2.0	-2.0
173	2.5	-1.5	-2.5	1.0	-1.5
174	3.5	-2.5	0.0	1.0	1.0
175	7.0	0.0	-3.5	7.0	3.5
176	7.0	-1.0	-3.0	6.0	3.0
177	9.5	-1.5	-5.0	8.0	3.0
178	-0.5	-2.5	-2.0	-3.0	-5.0
179	-5.0	0.0	-2.5	-5.0	-7.5
180	3.5	-0.5	-3.0	3.0	0.0
181	7.5	-1.5	-2.5	6.0	3.5
182	11.5	-0.5	-5.0	11.0	6.0
183	11.5	-1.5	-3.5	10.0	6.5
184	7.0	-1.0	5.0	6.0	11.0
185	10.5	-0.5	3.0	10.0	13.0
186	9.5	2.5	1.5	12.0	13.5
187	12.5	0.5	-2.0	13.0	11.0
188	9.5	-3.5	-2.5	6.0	3.5
189	6.0	-1.0	-2.0	5.0	3.0
190	6.5	-1.5	-3.0	5.0	2.0
191	-2.0	-2.0	4.5	-4.0	0.5
192	1.0	-2.0	6.5	-1.0	5.5
193	0.5	-1.5	8.0	-1.0	7.0
194	0.0	-3.0	11.0	-3.0	8.0
195	5.0	0.0	2.5	5.0	7.5
196	-1.5	-1.5	4.0	-3.0	1.0
197	0.0	-1.0	4.5	-1.0	3.5
198	4.0	0.0	5.5	4.0	9.5
199	14.0	-4.0	8.5	10.0	18.5
200	12.0	-1.0	-1.0	11.0	10.0
201	8.5	-1.5	24.5	7.0	31.5
average	2.5	-0.4	2.0	2.1	4.1
s. d.	5.7	3.2	6.6	6.7	9.8

Table 2-9. Net accumulation along 50-stake row at MD180 in 1995-1996.

(cm in depth)

Stake No.	10 Jan. -16 Nov. 1995 (310days)	16 Nov. 1995 -3 Jan. 1996 (48)	3 Jan. -1 Feb. 1996 (29)	10 Jan. 1995 -3 Jan. 1996 (358)	10 Jan. 1995 -1 Feb. 1996 (387)
	0 (MD180)	-	-0.5	-0.5	-
1	-2.5	-1.5	-0.5	-4.0	-4.5
2	-2.0	-2.0	-1.0	-4.0	-5.0
3	-3.5	-1.5	0.0	-5.0	-5.0
4	-2.0	-1.0	0.0	-3.0	-3.0
5	-2.5	-1.5	1.0	-4.0	-3.0
6	-2.0	-1.0	0.0	-3.0	-3.0
7	-2.0	0.0	-1.5	-2.0	-3.5
8	-2.5	-0.5	-1.5	-3.0	-4.5
9	1.0	-2.0	-0.5	-1.0	-1.5
10	0.0	-2.0	-0.5	-2.0	-2.5
11	-2.0	9.0	-9.0	7.0	-2.0
12	-4.5	10.5	-7.0	6.0	-1.0
13	-3.0	-1.0	-0.5	-4.0	-4.5
14	-1.5	-1.5	0.0	-3.0	-3.0
15	-5.5	4.5	-3.0	-1.0	-4.0
16	-1.0	-1.0	-1.0	-2.0	-3.0
17	-3.5	-0.5	-0.5	-4.0	-4.5
18	5.0	-1.0	-1.5	4.0	2.5
19	-2.5	-0.5	-1.0	-3.0	-4.0
20	-2.0	-1.0	-1.0	-3.0	-4.0
21	-1.5	-1.5	2.5	-3.0	-0.5
22	-3.5	-1.5	3.0	-5.0	-2.0
23	-2.0	-1.0	-1.0	-3.0	-4.0
24	-6.0	-1.0	-0.5	-7.0	-7.5
25	-9.0	0.0	-1.0	-9.0	-10.0
26	-6.5	-0.5	0.0	-7.0	-7.0
27	-3.0	-1.0	-1.0	-4.0	-5.0
28	-7.5	3.5	-5.0	-4.0	-9.0
29	-2.5	5.5	-7.0	3.0	-4.0
30	-1.0	0.0	-0.5	-1.0	-1.5
31	-6.5	-0.5	-1.0	-7.0	-8.0
32	-0.5	-1.5	-0.5	-2.0	-2.5
33	-2.5	-0.5	-1.0	-3.0	-4.0
34	-9.5	-1.5	0.0	-11.0	-11.0
35	-3.5	-0.5	0.0	-4.0	-4.0
36	-4.5	-1.5	-1.0	-6.0	-7.0
37	-4.0	-1.0	-0.5	-5.0	-5.5
38	-2.0	10.0	-4.5	8.0	3.5
39	-3.5	11.5	0.0	8.0	8.0
40	-4.0	-2.0	8.0	-6.0	2.0
41	-3.5	3.5	-5.0	0.0	-5.0
42	-2.0	8.0	-5.5	6.0	0.5
43	-1.5	0.5	-1.5	-1.0	-2.5
44	-1.0	-2.0	0.0	-3.0	-3.0
45	-5.0	0.0	-1.5	-5.0	-6.5
46	-3.5	-1.5	-0.5	-5.0	-5.5
47	-5.0	-1.0	-1.0	-6.0	-7.0
48	-3.5	-2.5	0.0	-6.0	-6.0
49	-8.5	-2.5	-1.0	-11.0	-12.0
50	-2.5	-1.5	2.0	-4.0	-2.0
average	-3.2	0.4	-1.1	-2.7	-3.7
s. d.	2.5	3.5	2.6	4.2	3.5

Table 2-10. Net accumulation along 50-stake row at MD364 in 1995-1996.

(cm in depth)

Stake No.	14 Jan. -14 Nov. 1995 (304days)	14 Nov. 1995 -6 Jan. 1996 (53)	6 Jan. -30 Jan. 1996 (24)	14 Jan. 1995 -6 Jan. 1996 (357)	14 Jan. 1995 -30 Jan. 1996 (381)
0 (MD364)	8.5	-0.5	-1.0	8.0	7.0
1	14.5	-0.5	0.0	14.0	14.0
2	17.0	-0.5	0.5	16.5	17.0
3	22.5	-2.5	1.0	20.0	21.0
4	2.5	11.5	3.0	14.0	17.0
5	0.0	0.0	12.0	0.0	12.0
6	-0.5	-1.0	9.0	-1.5	7.5
7	1.5	-0.5	4.0	1.0	5.0
8	9.0	0.0	-0.5	9.0	8.5
9	11.5	-0.5	-0.5	11.0	10.5
10	1.0	-1.0	5.0	0.0	5.0
11	-2.5	3.5	-0.5	1.0	0.5
12	7.0	-1.0	0.0	6.0	6.0
13	6.0	12.0	6.0	18.0	24.0
14	21.5	-1.5	0.5	20.0	20.5
15	11.0	-1.0	0.0	10.0	10.0
16	4.5	-1.5	3.0	3.0	6.0
17	8.0	-0.5	0.0	7.5	7.5
18	-1.0	0.0	4.5	-1.0	3.5
19	-2.0	-0.5	-0.5	-2.5	-3.0
20	4.0	0.0	-0.5	4.0	3.5
21	9.5	0.0	0.0	9.5	9.5
22	-2.0	0.0	-0.5	-2.0	-2.5
23	-1.5	0.5	-1.0	-1.0	-2.0
24	-0.5	12.5	0.5	12.0	12.5
25	0.5	-1.5	0.5	-1.0	-0.5
26	3.0	-1.0	-0.5	2.0	1.5
27	-1.5	-0.5	0.0	-2.0	-2.0
28	0.5	-1.5	2.5	-1.0	1.5
29	5.0	-1.0	1.0	4.0	5.0
30	4.0	8.0	-1.0	12.0	11.0
31	6.0	6.0	1.5	12.0	13.5
32	6.0	2.0	0.5	8.0	8.5
33	3.0	6.0	1.0	9.0	10.0
34	1.0	0.0	0.5	1.0	1.5
35	-1.0	0.0	0.0	-1.0	-1.0
36	-1.5	-0.5	0.0	-2.0	-2.0
37	-0.5	0.5	-0.5	0.0	-0.5
38	0.0	2.0	-0.5	2.0	1.5
39	0.5	-1.5	-1.5	-1.0	-2.5
40	2.5	-2.5	0.0	0.0	0.0
41	-0.5	0.5	1.0	0.0	1.0
42	-4.0	4.0	-1.0	0.0	-1.0
43	1.5	-0.5	-1.0	1.0	0.0
44	2.0	1.0	-1.0	3.0	2.0
45	0.0	-1.0	0.0	-1.0	-1.0
46	6.5	-2.0	0.0	4.5	4.5
47	18.5	-2.5	0.0	16.0	16.0
48	1.0	8.0	-10.0	9.0	-1.0
49	0.5	-1.5	0.0	-1.0	-1.0
50	16.5	-1.5	-0.5	15.0	14.5
average	4.3	0.9	0.7	5.2	5.9
s. d.	6.4	3.6	2.9	6.6	7.0

Table 2-11. Net accumulation along 50-stake row at MD560 in 1995-1996.

(cm in depth)

Stake No.	20 Jan. -11 Nov. 1996 (295days)	11 Nov. 1995 -9 Jan. 1996 (59)	9 Jan. -27 Jan. 1996 (18)	20 Jan. 1995 -9 Jan. 1996 (354)	20 Jan. 1995 -27 Jan. 1996 (372)
0 (MD560)	21.0	-2.0	0.0	19.0	19.0
1	2.5	3.5	0.5	6.0	6.5
2	-0.5	5.5	2.0	5.0	7.0
3	4.0	-2.0	0.5	2.0	2.5
4	11.5	0.5	0.0	12.0	12.0
5	7.0	5.0	0.0	12.0	12.0
6	14.5	-0.5	0.0	14.0	14.0
7	10.0	-1.0	0.5	9.0	9.5
8	4.5	4.5	0.5	9.0	9.5
9	7.0	-1.0	5.5	6.0	11.5
10	14.5	-0.5	-1.0	14.0	13.0
11	13.0	17.0	0.0	30.0	30.0
12	16.5	-0.5	4.5	16.0	20.5
13	23.0	-2.0	5.5	21.0	26.5
14	12.0	0.0	5.5	12.0	17.5
15	9.5	0.5	0.0	10.0	10.0
16	9.0	0.0	0.0	9.0	9.0
17	2.5	-0.5	1.0	2.0	3.0
18	3.5	0.5	5.5	4.0	9.5
19	29.5	-3.5	-8.5	26.0	17.5
20	8.5	2.5	6.5	11.0	17.5
21	0.0	8.0	5.0	8.0	13.0
22	16.5	6.5	-0.5	23.0	22.5
23	7.0	0.0	14.0	7.0	21.0
24	-0.5	0.5	-0.5	0.0	-0.5
25	0.0	-2.0	0.0	-2.0	-2.0
26	1.0	-2.0	0.0	-1.0	-1.0
27	1.5	-0.5	0.5	1.0	1.5
28	-0.5	-0.5	0.0	-1.0	-1.0
29	-0.5	-1.5	1.0	-2.0	-1.0
30	4.5	8.5	0.0	13.0	13.0
31	16.5	-0.5	0.0	16.0	16.0
32	13.5	0.5	3.0	14.0	17.0
33	22.5	-0.5	0.5	22.0	22.5
34	16.5	2.5	1.0	19.0	20.0
35	13.5	-1.5	0.0	12.0	12.0
36	15.5	1.5	-0.5	17.0	16.5
37	13.5	-0.5	-0.5	13.0	12.5
38	8.5	-1.5	0.5	7.0	7.5
39	2.5	-1.5	0.5	1.0	1.5
40	0.0	3.0	1.5	3.0	4.5
41	0.5	0.5	0.5	1.0	1.5
42	2.5	-0.5	5.5	2.0	7.5
43	12.0	0.0	0.5	12.0	12.5
44	17.5	-1.5	0.0	16.0	16.0
45	11.5	-0.5	5.5	11.0	16.5
46	23.5	-0.5	5.5	23.0	28.5
47	6.0	1.0	0.0	7.0	7.0
48	20.0	3.0	0.0	23.0	23.0
49	9.0	0.0	1.0	9.0	10.0
50	7.0	6.0	0.0	13.0	13.0
average	9.5	1.0	1.4	10.5	11.9
s. d.	7.5	3.5	3.1	7.8	7.9

Table 2-12. Net accumulation along 50-stake

row at DF80 in 1995-1996.

(cm in depth)

Stake No.	19 Jan. 1995 -23 Jan. 1996 (369days)
0 (DF80)	6.5
1	7.0
2	11.5
3	11.0
4	10.5
5	13.0
6	9.5
7	8.0
8	10.0
9	2.0
10	6.0
11	8.0
12	15.0
13	8.5
14	11.5
15	11.5
16	9.5
17	9.0
18	9.5
19	9.0
20	9.5
21	5.0
22	11.0
23	10.5
24	10.5
25	13.0
26	11.0
27	10.0
28	5.0
29	2.5
30	8.0
31	8.0
32	15.5
33	13.5
34	20.0
35	20.5
36	15.5
37	11.5
38	4.0
39	2.0
40	3.5
41	2.0
42	2.5
43	9.0
44	14.0
45	11.0
46	8.5
47	10.5
48	12.0
49	3.5
50	7.0
average	9.3
s. d.	4.2

Table 2-13. Net accumulation at Dome Fuji Station from 25 January 1995 to 30 January 1996.
(cm in depth)

Stake No.	25 Jan. 1995 -15 Feb. (21days)	15 Feb. -28 Feb. (13)	28 Feb. -15 Mar. (15)	15 Mar. -30 Mar. (15)	30 Mar. -15 April 1995 (16)
I-1	1.5	0.0	1.0	-0.5	0.0
-2	1.5	-0.5	3.5	-0.5	0.0
-3	0.5	-0.5	0.0	0.0	4.0
-4	0.5	0.0	3.0	-0.5	0.5
-5	1.5	0.0	0.0	-0.5	0.0
-6	1.0	-0.5	-0.5	0.5	0.5
II-1	1.0	7.0	1.5	0.0	-0.5
-2	0.5	0.5	-0.5	0.0	2.0
-3	4.0	-0.5	0.0	0.0	0.5
-4	1.0	-0.5	0.0	0.0	0.0
-5	1.0	-0.5	0.0	0.5	1.0
-6	0.5	2.0	0.0	-0.5	0.0
III-1	1.5	0.0	0.0	-0.5	0.5
-2	1.5	-0.5	0.0	0.0	0.0
-3	-0.5	0.0	-0.5	0.0	0.5
-4	1.0	-1.0	0.5	0.0	9.5
-5	0.5	-0.5	1.0	1.0	0.5
-6	0.0	0.5	-0.5	0.0	0.5
IV-1	0.0	3.5	1.0	0.5	-0.5
-2	0.5	0.0	-0.5	0.0	0.0
-3	-0.5	3.0	0.0	-0.5	7.5
-4	1.5	-0.5	-0.5	0.5	0.0
-5	0.0	0.0	0.0	0.0	0.0
-6	0.5	0.0	0.0	0.0	0.0
V-1	1.0	0.5	0.5	-0.5	4.0
-2	1.0	-0.5	0.0	0.5	0.5
-3	1.5	2.5	0.0	-0.5	1.5
-4	1.0	-0.5	1.5	-0.5	1.0
-5	2.0	-1.0	0.0	0.0	1.0
-6	1.0	-1.0	0.5	0.0	0.5
VI-1	0.5	1.0	5.5	0.0	7.0
-2	0.0	-0.5	0.0	0.0	0.5
-3	1.0	0.5	-0.5	0.5	-0.5
-4	-0.5	0.0	0.5	0.0	0.0
-5	0.0	0.0	0.0	0.0	0.0
-6	-0.5	-0.5	-0.5	0.0	0.5
average	0.8	0.3	0.4	0.0	1.2
s. d.	0.9	1.5	1.2	0.4	2.3

(cm in depth)

Stake No.	15 April	30 April	15 May	30 May	15 June
	-30 April (15)	-15 May (15)	-30 May (15)	-15 June (16)	-30 June 1995 (15)
I-1	2.0	-2.0	2.0	3.5	-0.5
I-2	7.0	-2.5	-1.0	-1.5	0.5
I-3	-1.5	-2.5	0.0	19.0	0.0
I-4	0.0	0.0	2.0	-3.0	0.5
I-5	1.0	-0.5	0.0	-1.0	0.5
I-6	-1.0	0.0	0.5	14.0	-1.5
II-1	0.5	-0.5	-0.5	3.5	5.5
II-2	-1.5	-0.5	0.0	-0.5	0.0
II-3	0.5	-0.5	-0.5	-0.5	0.5
II-4	0.5	0.0	0.0	-1.0	0.5
II-5	3.0	-2.0	-0.5	7.0	0.0
II-6	5.0	-1.0	-3.0	-1.5	0.0
III-1	-0.5	0.0	0.0	0.0	0.5
III-2	5.5	-1.0	-1.0	-2.0	4.5
III-3	0.0	-0.5	9.0	-9.0	2.5
III-4	-1.0	-1.0	-1.5	-5.5	1.0
III-5	0.0	-1.0	12.5	-10.0	12.0
III-6	1.5	0.5	0.0	12.5	1.0
IV-1	1.5	-1.0	-0.5	-0.5	0.0
IV-2	1.0	-1.0	3.5	15.0	-0.5
IV-3	-6.5	-0.5	0.0	0.0	0.0
IV-4	0.0	0.0	0.0	1.0	0.0
IV-5	3.0	-2.0	4.5	3.0	0.5
IV-6	5.5	-1.0	-2.0	2.0	0.0
V-1	-1.5	-1.5	-1.0	23.5	0.0
V-2	1.0	-0.5	1.5	-3.5	0.0
V-3	2.5	-1.0	-2.5	-1.0	-0.5
V-4	4.5	-1.0	-2.0	-2.5	0.5
V-5	0.5	-1.0	-0.5	0.0	0.0
V-6	0.5	-1.0	-0.5	0.0	0.0
VI-1	-5.5	0.5	-2.0	-4.5	0.5
VI-2	1.0	-0.5	-7.0	7.5	-1.0
VI-3	0.0	0.0	6.0	-6.5	0.0
VI-4	0.0	-0.5	-0.5	2.0	0.5
VI-5	0.5	-0.5	3.5	-2.0	0.0
VI-6	8.5	-1.5	0.5	-6.0	0.5
average	1.0	-0.8	0.5	1.4	0.8
s. d.	2.9	0.7	3.3	7.3	2.3

(cm in depth)

Stake No.	30 June	15 July	30 July	15 Aug.	30 Aug.
	-15 July (15)	-30 July (15)	-15 Aug. (16)	-30 Aug. (15)	-15 Sep. 1995. (16)
I-1	2.0	-5.0	6.5	-1.0	0.0
-2	-1.0	9.5	0.5	0.5	-0.5
-3	-17.5	-0.5	1.5	1.5	0.5
-4	5.0	-3.5	0.0	-0.5	0.5
-5	0.0	4.5	0.0	0.0	0.0
-6	-9.5	4.0	-1.0	-0.5	0.5
II-1	-8.5	-1.0	0.0	0.0	2.0
-2	2.5	-2.5	0.5	0.0	0.5
-3	0.0	4.5	0.0	-0.5	0.5
-4	0.0	0.0	0.0	0.0	0.5
-5	-9.0	6.0	0.0	1.0	0.5
-6	8.0	-1.5	1.0	0.0	1.0
III-1	-0.5	5.0	0.0	0.0	0.5
-2	3.5	-5.5	1.5	-1.5	0.0
-3	-1.5	7.0	3.0	-2.5	0.0
-4	13.5	-6.0	-0.5	0.0	1.0
-5	-12.5	-0.5	0.0	0.5	0.0
-6	-8.0	-2.0	0.0	0.0	1.5
IV-1	4.0	-4.0	0.5	0.0	0.0
-2	-12.0	-5.5	4.5	-0.5	1.5
-3	4.5	9.5	0.0	-0.5	0.5
-4	-0.5	0.0	-0.5	0.0	0.0
-5	-2.0	-3.5	0.5	0.0	1.5
-6	7.0	-5.5	0.0	-0.5	0.5
V-1	-11.5	-2.0	6.0	-2.0	-0.5
-2	0.5	0.0	1.0	0.0	3.5
-3	4.0	-3.5	4.5	-2.0	1.5
-4	5.0	7.5	0.0	0.0	0.5
-5	0.0	3.0	0.5	0.5	0.0
-6	0.0	3.5	0.0	1.0	-1.0
VI-1	4.0	-2.0	0.5	0.0	1.0
-2	3.5	-3.5	0.5	0.5	-0.5
-3	0.5	5.5	0.0	0.0	0.0
-4	-2.5	1.5	-0.5	2.0	-1.0
-5	-0.5	1.0	-0.5	0.5	0.0
-6	2.5	-4.0	1.0	0.5	0.5
average	-0.8	0.3	0.9	-0.1	0.5
s. d.	6.4	4.4	1.8	0.9	0.8

(cm in depth)

Stake No.	15 Sep.	30 Sep.	15 Oct.	30 Oct.	15 Nov.
	-30 Sep. (15)	-15 Oct. (15)	30 Oct. (15)	-15 Nov. (16)	-30 Nov. 1995 (15)
I -1	1.0	5.0	0.0	0.0	-0.5
-2	1.5	-1.5	0.5	0.0	0.0
-3	1.5	4.0	0.5	0.0	-1.0
-4	2.5	9.0	0.5	0.0	0.5
-5	0.5	-0.5	0.0	0.0	0.0
-6	0.5	-0.5	0.5	0.0	0.0
II -1	1.0	-2.0	1.0	0.0	0.0
-2	3.0	4.0	-0.5	0.0	-0.5
-3	0.0	0.0	0.0	0.0	0.0
-4	0.0	-0.5	0.0	0.0	0.0
-5	5.0	-4.0	0.5	0.5	0.5
-6	1.0	0.5	2.5	-0.5	0.0
III -1	1.0	0.5	-0.5	-0.5	0.5
-2	1.0	-1.0	1.0	0.0	0.0
-3	0.0	0.5	0.0	0.0	1.0
-4	1.0	-1.5	0.0	0.0	0.0
-5	0.5	4.0	1.0	0.0	0.0
-6	1.5	0.0	1.0	0.0	0.0
IV -1	0.5	-0.5	0.0	0.0	0.0
-2	-0.5	-3.0	3.0	0.0	-0.5
-3	0.0	0.5	-0.5	0.0	0.0
-4	0.0	0.5	0.0	-0.5	0.0
-5	1.5	-2.0	0.5	0.0	-0.5
-6	0.0	-0.5	0.0	0.0	0.5
V -1	0.5	-2.5	-0.5	0.0	0.5
-2	1.0	7.0	0.0	-0.5	0.5
-3	0.5	-1.5	-1.0	0.0	-1.0
-4	0.0	0.0	-0.5	0.5	0.0
-5	0.5	0.0	0.0	0.0	0.0
-6	2.5	-1.5	0.0	0.0	3.5
VI -1	0.5	1.5	0.0	0.0	0.0
-2	0.5	0.0	1.0	0.0	0.0
-3	0.0	0.5	0.0	-0.5	1.0
-4	0.0	1.0	1.0	-0.5	0.0
-5	0.5	6.0	0.5	0.0	-0.5
-6	0.0	1.5	7.5	-0.5	-1.0
average	0.8	0.6	0.5	-0.1	0.1
s. d.	1.0	2.8	1.4	0.2	0.7

(cm in depth)

Stake No.	30 Nov. -15 Dec. (15)	15 Dec. 30 Dec. 1995 (15)	30 Dec. 1995 -15 Jan. 1996 (16)	15 Jan. 1996 -30 Jan. (15)	25 Jan. 1995 -30 Jan. 1996 (370)
I-1	-0.5	0.0	-1.5	-0.5	12.5
-2	-0.5	0.0	-0.5	-1.0	14.0
-3	-0.5	1.0	-0.5	-0.5	9.0
-4	0.0	0.0	-1.5	0.5	16.0
-5	0.0	0.0	-1.5	1.5	5.5
-6	-0.5	0.0	0.0	0.0	6.5
II-1	1.0	-0.5	-0.5	1.0	11.0
-2	-0.5	0.0	-1.5	0.0	5.0
-3	-0.5	0.5	-0.5	-0.5	7.0
-4	0.0	1.5	-1.5	0.5	1.0
-5	-0.5	0.5	-1.5	0.5	9.5
-6	-0.5	0.5	-1.0	0.0	12.5
III-1	-0.5	1.5	-1.0	-0.5	7.0
-2	0.5	3.5	1.5	-0.5	11.0
-3	0.0	0.5	-2.0	0.5	8.0
-4	-0.5	1.5	0.5	-1.0	10.0
-5	-0.5	0.5	-1.0	1.0	9.0
-6	-0.5	4.0	-0.5	1.0	14.0
IV-1	0.0	1.0	-1.0	1.0	5.5
-2	0.0	1.0	-0.5	2.0	7.5
-3	0.0	-1.0	-1.5	-0.5	13.5
-4	0.0	0.0	-0.5	2.0	2.5
-5	0.0	2.0	0.0	0.5	7.5
-6	0.0	1.0	-1.5	2.0	8.0
V-1	0.0	1.0	0.5	-1.0	13.5
-2	-1.5	-0.5	0.5	0.5	12.0
-3	0.0	1.0	-0.5	-1.5	3.0
-4	-0.5	0.0	-1.0	-1.0	12.5
-5	0.0	1.0	0.0	2.0	8.5
-6	-1.0	2.5	0.0	-0.5	9.0
VI-1	-0.5	3.5	0.0	0.0	11.5
-2	0.5	0.5	1.5	0.5	5.0
-3	-0.5	1.0	-1.0	0.5	7.5
-4	0.0	-0.5	0.0	1.0	3.0
-5	0.0	0.0	1.5	0.5	10.5
-6	0.0	0.0	-1.5	0.5	8.0
average	-0.2	0.8	-0.5	0.3	8.8
s. d.	0.4	1.1	0.9	0.9	3.6